



## Overview of Beginning of Life Issues

Fetal Growth From 8 to 40 Weeks



## A Devout Home Concerned about Life



## A Father's Day Consideration

At Caesarea there was a man named Cornelius, a centurion in what was known as the Italian Regiment. He and all his family were devout and God-fearing; he gave generously to those in need.

# CLR PRESENTS

*Presentations for your congregation and organization*



## Birth Control & the Christian Family

*Scientific Truth*

Rev. Robert Fleischmann  
National Director  
Christian Life Resources



## In Vitro Fertilization (IVF)

*A Reproductive Option?*



## Ministry

Tool



## SPEAKER



**ROBERT R.  
FLEISCHMANN** :

***“You can trust Bob to present every life issue in a biblical and pastoral way.”***

-Pastor Paul Prange,  
WELS Administrator for Ministerial Education

The Reverend Robert Fleischmann currently serves as the National Director of Christian Life Resources, Incorporated. The organization’s primary mission is to educate on life and family issues. Its ministry consists of 17 pregnancy resource centers and one maternity home.

The organization also helps people to understand and make Scripturally-guided decisions in medical matters, particularly as they apply to beginning- and end-of-life concerns. The Bible is central in this ministry which seeks to save lives both for now and eternity through education on such critical issues as abortion, infanticide, suicide and euthanasia. Christian Life Resources, Inc., is one of the largest single-denominational pro-life agencies in the United States. Though its theological position reflects that of the Wisconsin Evangelical Lutheran Synod (WELS), the agency serves people of all faiths.

Robert Fleischmann was born in Pleasanton, California in 1956. He was raised in Lake Geneva, Wisconsin where he attended public grade schools and high school. He considers First Ev. Lutheran Church in Lake Geneva his home congregation and was confirmed from there in 1970.

He became involved with life issues in 1976 while a student at Bethany Lutheran College in Mankato, Minnesota. He later graduated from Bethany in 1979. That year he began working with Wisconsin Citizens Concerned for Life (the precursor to Wisconsin Right to Life) where he served as the volunteer co-editor of the organization’s state newsletter. He also helped form the Wisconsin state affiliate of Lutherans for Life.

During his seminary years, he began working in the area of life issues within the Wisconsin Evangelical Lutheran Synod (WELS). He attended the May 1983 formation of what is today Christian Life Resources and was one of the original signers of the organization's constitution.

Pastor Fleischmann marked his entrance into the pastoral ministry in 1983 upon his graduation from Wisconsin Lutheran Seminary in Mequon, Wisconsin. He was called to serve as the pastor of Good Shepherd Evangelical Lutheran Church in Plymouth, Wisconsin. In 1988 Pastor Fleischmann was called to serve as the first National Director of Christian Life Resources, a position he holds to this day.

Pastor Fleischmann's responsibilities include administering all programs and staff for Christian Life Resources, Inc. In 1993 he founded *New Beginnings - A Home for Mothers* which operated in Denver, Colorado, for nearly 21 years. In the summer of 2014 that ministry is relocating to Milwaukee, Wisconsin, where it continues to care for single mothers and babies.

Pastor Fleischmann speaks throughout North America on the Biblical approach to various life and family issues. He writes on a wide variety of life issues and counsels people with God's Word in making medical decisions.

He is a member of the ministerial staff at St. Paul Ev. Lutheran Church in Slinger, Wisconsin, where he serves in a limited capacity as its lead administrative pastor. He is an Adjunct Professor of Philosophy in the Bioethics Department at Concordia University in Mequon, Wisconsin. He is presently serving an advisory role on a forthcoming PBS television documentary on palliative care entitled, "Best Care Possible," based on Dr. Ira Byock's book by the same title.

Pastor Fleischmann and his family live in Hartford, Wisconsin, and his parents live next door.

.....

***The mission of Christian Life Resources  
is to use life and family issues as bridges  
to convey the love of God and to share the  
message of salvation through Christ.***

NOTE: All presentations are customized for the particular setting as much as possible. However, we encourage you to select from one of the following presentations listed below. If you cannot find a presentation suited for your particular needs you may still request it. If time allows a new presentation can be developed.



### **Abortion: Then and Now**

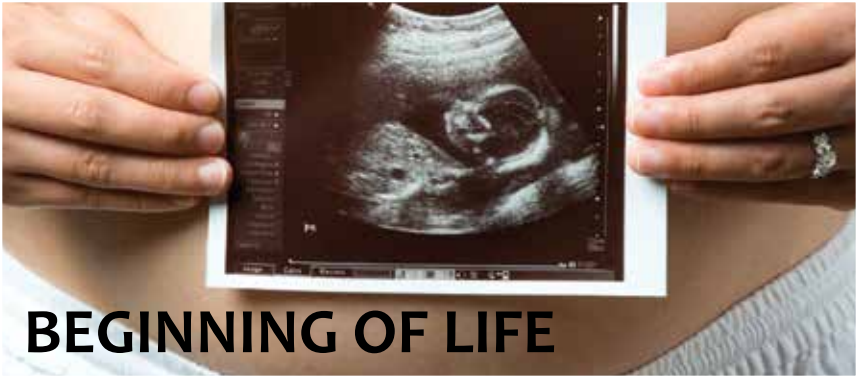
The first half of the presentation examines the U. S. history of legalized abortion on demand and collateral issues (i.e., when life begins, who decides, etc.). The latter half explores the spiritual dimensions of post abortion syndrome and how Christians are to provide counsel for those considering an abortion or wrestling with the guilt of having had an abortion.

### **Abortion in the 21<sup>st</sup> Century**

A great amount of history has passed since the 1973 legalization of abortion in the United States. The number of abortions performed far exceeded even the estimates of its advocates. Most alarming, however, is the evolution of abortion reasoning and its acceptance of killing. This presentation will examine the eugenics underpinnings of legalized abortion and the Christian response.

### **Post-Abortion Syndrome**

This presentation is extracted and expanded from the “Abortion: Then and Now” presentation above. It focuses on the emotional aftermath of abortion and is designed to engage more audience participation to discuss anecdotal experiences and God-pleasing methods of helping PAS women.



# BEGINNING OF LIFE

## Beginning-of-Life Issues: Understanding How Life is Created

This presentation is a blend of Biblical and biological truths. It is a detailed examination of the female reproductive cycle in the light of Scripture. It marvels at God's procreative gift to human beings and explores how chemicals (i.e., hormonal birth control) affect the reproductive cycle.

## ART: Artificial Reproductive Technology

The field of ART has exploded in the last quarter century. Drug treatments to enhance fertility, the development of in-vitro fertilization technology and a host of other developments opens up new possibilities and ethical challenges to bring children to those who otherwise might be infertile. This workshop will explore developments in this field and the Christian response.

## The Christian and Birth Control

The question of using birth control rests on two issues: motive and method. This presentation begins by exploring the motive for using birth control and how it compares with Scripture. The latter half looks at various forms of birth control, the ways in which they work and the problems that some contraceptives can cause – both for the life of the unborn child and the health of the mother in some instances.



See now that I myself am He! There is no god besides me. *I put to death and I bring to life; I have wounded and I will heal, and no one can deliver out of my hand.* — Deuteronomy 32:39

**Principle**

**1873** — March 2: Congress passes the Comstock Law, an anti-obscenity act that specifically lists contraceptives as obscene material and outlaws the dissemination of them via the postal service or interstate commerce. At the time, the United States is the only western nation to enact laws criminalizing birth control.



# OUTREACH & LIFE ISSUES

## Bridge Ministry as an Outreach Tool

The controversial life and family issues of our time provides an opportunity to witness to God's love and salvation through Jesus Christ. This presentation explores both how the issues can be used well to that end and also how they can become obstacles if not used correctly. The presentation begins with establishing a clear understanding of the distinction between "in-reach" and "out-reach."

**The Mission of CLR**

The mission of Christian Life Resources is to use life and family issues as bridges to convey the love of God and to share the message of salvation through Christ.

An illustration showing a wooden cross on the left side of a path. A small figure of a person is walking away from the cross towards a bright, glowing light at the end of the path, which is framed by a rainbow-like arch. The scene is set against a dark, purple and blue background.

**Ministry Ideas**

Brainstorming

Life Issue Ideas

An illustration of a green chalkboard with a wooden chalk holder on the left. The text "Brainstorming" and "Life Issue Ideas" is written on the board. There are some faint, light-colored handprints or scribbles on the right side of the board.



# END-OF-LIFE ISSUES

## **A Practical Guide for Christian Caregiving**

An examination of end-of-life care primarily from the perspective of the caregiver. It examines the kinds of decisions that must be made and the ways to approach those decisions in a God-pleasing manner.

## **Euthanasia – Ethical Issues Involving Death and Dying**

Society continues to accept the intentional practice of ending human life. This presentation reviews the contrast between a secular and Christian worldview in examining end-of-life issues. By understanding the distinctions we are then able to consider the Christian response both as an individual, as a family and as a congregation.

## **Twilight Issues: Documents, Decisions and Compassion**

Death is the inevitable result of sin in the world. This presentation provides a current overview of dying in America and how a Christian responds to the challenges and opportunities there are at the end of life. The presentation will focus heavily on the use of medical directive statements: their role, dangers, and opportunities.

## **Life, Death and In-Between: Things You Wanted to Know**

Technology can seem like a blessing as well as a curse. Despite its many advantages it also complicates life and death. This presentation will examine challenging questions about the use of technology to preserve life. It will also address when enough is enough.



### The Media and Its Effect on Families

Visual training is a powerful tool. It taps both the intellect and emotion. This presentation will examine visual images of our time and how they influence social changes – many of which run contrary to Scripture. The intent of this presentation is to heighten awareness on the types of media out there in today's world.

### A Devout Home Is Concerned about Life

In today's society, human life – whether at its beginning or at its end – is in peril. This presentation looks at the way to defend life starting within the family. It is an exploration of how we care for our own family members during an unplanned pregnancy, disability or declining health.

### Is the Christian Family Obsolete?

Recent developments in society have many wondering whether it is time to reconsider the definition of a family. This presentation will look at the challenges and the Biblical direction we should take. Through discussion we will consider how to react to social trends in a way that provides the honest Christian witness.







## OTHER

### **The Ministry of Christian Life Resources**

Christian Life Resources formed in the late 1970s and over the years has addressed a wide spectrum of life and family issues. This workshop will explore the history of Christian Life Resources, its daughter ministry, New Beginnings - A Home for Mothers, and its ongoing work to speak up for those who cannot speak for themselves.

### **Life Issues – Principles That Guide Us**

Despite the growth in challenging life and family issues the principles are unchanged. This presentation will look at the foundation of our Christian decision-making and will provide brief application to some of the more prominent life and family issues of our time.

### **The Hot Seat: An Open Forum on All Issues**

Life is full of challenges. Sincere Christians want to say and do the right thing but are often overwhelmed by the world around them. This is not a presentation but an open forum in which participants are given a list of subjects in advance to formulate questions. On the day of the presentation the questions are handled in random order.

### **Eugenics: Efforts to “Improve” Human Life**

The line between helping life and eliminating the undesired still remains blurred over the years. This presentation will focus on the eugenics movement citing historical milestones and contemporary vestiges that affect Christian decision-making.

### **Organ Donation and Stem Cell Research**

The ability to replace damaged or diseased organs extends the lives of many people. Such developments often come with challenging ethical

implications. This presentation will review the background of organ donation and current stem cell research and explore some of the current and anticipated challenges in the future.

**Biotechnology: Playing God?**

Technology has advanced far beyond the wildest imaginations of our forefathers. This presentation will explore current research initiatives, the ethical challenges, and wrestle with the question of whether in this pursuit we remain good stewards over life or presume to replace God.

**The Christian and Civic Activism**

This presentation will be a historical overview of church/state concerns beginning with Biblical references and a close examination of developments in American history. Of particular focus will be the proper response of the individual Christian and the reasonable expectations of the congregation and a church body.



**The Nature of a "Crisis"**

- Emotional more than Rational
- Relies heavily on instinctive responses



**Whom is CLR?**

is within our Fellowship

- Laity
- 3) Those endangered
- 4) Those needing direction



# SERIES

---

NOTE: The preceding presentations can be combined into their own series. The following presentations are already designed to work as a unit.

## **Facing Issues in the Family (3-Part Series)**

- **Understanding Family**
  - o The family is how God brings life into the world. Despite the ravages of sin upon the family it nevertheless is God's design for a mother and father to have child. And each child is born with purposes established by God. This workshop will review God's design and function for the family
- **Family as a Learning Environment**
  - o There is more to "family" than procreation. The family design is the crucial foundational level of training and nurturing for lifelong service to God and to others. This workshop will explore how family is the learning environment for the things of God and the practice context for facing the real world.
- **Facing the Challenges**
  - o Without a doubt the traditional family is increasingly becoming a distant memory in our culture. That presents challenges not only in holding the family together but in permitting the family to do its work. This final workshop will look at the challenges and offer suggested approaches to accomplish the work of the family.

## **The Legacy We Leave (3-Part Series)**

- **As Individuals**
  - o Everyone develops a reputation based both on personality and actions. After death that reputation often becomes a legacy which is emulated by children, relatives and friends. This workshop will explore the spiritual reputation we forge in life, the spiritual legacy we leave upon death, and the ways that legacy touches others.
- **As a Family**
  - o The family unit is the foundational social unit of human existence that was established by God in the Garden of Eden. Despite the ravages of sin over generations the family unit still holds a place in establishing values, priorities and practices that extend for generations to come. This workshop will examine the family legacy, how it is formed and how it continues with special emphasis of reflecting God's values within the family.

- **As a Congregation**

- o Each member touches the legacy of the congregation. Some members have enormous impact, while others have seemingly little impact. Collectively, however, the congregation that exists at each moment in time is a building block in a congregation's legacy for the future. This workshop will look at the legacy a congregation wants for generations to come and how current activities and decisions affect that legacy.

### **Step Up to the Table or Find Yourself on the Menu (6-Part Series)**

- **Authority and the Tale of Two Trees**

- o We begin the series with an understanding of what happened with the fall into sin. This is critical in establishing our authority in understanding right from wrong. The workshop will explore competing worldviews and the manner in which Christians can use the sins of the world as a bridge to a witness life in Christ.

- **What to Do with Useless Eaters**

- o History has long had eugenics overtones. In the last century eugenics has embraced a valid philosophical approach to human existence – resulting in some good and some very bad consequences. This workshop will focus how eugenics started and where it is going.

- **Where Do Babies Come From?**

- o This is more than a lesson in the birds and the bees. This is a detailed exploration of theological and biological underpinnings of when life begins.

- **All This Technology**

- o Technology has brought many blessing to people. Yet, in the hands of sinners, it also can be a curse. This workshop will explore what technology has done, what it is doing (or can do), and its potential as a blessing or a curse.

- **To Each His Own**

- o The movement to decriminalize homosexuality and bring it into the mainstream of society is the latest manifestation of today's "me-centric" world. This workshop will explore the post-modern view of ethics and autonomy and compares it with the Biblical testimony.

- **Christian Civic Activism**

- o Perennially Christians in America are offered the opportunity to become politically active. This workshop will translate knowledge into activism as we look at opportunities to show love to God and others and consider the tension between church and state and the ways it can best be resolved.

# REQUEST A SPEAKER

## TO BOOK A PREACHER/PRESENTER:

- **Online:**
  1. Go to [www.ACompassionateVoice.com](http://www.ACompassionateVoice.com)
  2. Click on “Request a Speaker”
  3. Fill out form
- Call: 1-800-729-9525
- Email: [info@christianliferesources.com](mailto:info@christianliferesources.com)

Please have the following information ready when contacting CLR:

- Contact Person
- Email
- Phone Number
- Organization/Church/School
- Event Address
- City
- State
- Zip Code
- Country
- Event Date
- Event Time
- Audience Size
- Type of Presentation
- A/V Equipment Available
- Do You Need the Speaker’s Bio?
- Do You Need the Speaker’s Photo?

## COMPENSATION GUIDELINES:

Speaker compensation is defined as follows:

- Honorarium for presentation/engagement
- Travel expenses to and from the event
- Lodging accommodations, if beyond car travel distance of CLR office.

In return, speakers are expected to provide:

- A quality presentation within time constraints
- Necessary handout materials on or before deadlines
- Assistance in promoting the event

**NOTE:** The above serve as guidelines; exceptions will be considered as circumstances warrant.

## COMPENSATION DETAILS:

### HONORARIUM

A speaker honorarium is asked of the group's choosing.\* This honorarium can be in the form of a stipend determined by the group/congregation or a freewill offering collection taken after the presentation. Checks should be made out to Christian Life Resources. Honorariums can be handed to the presenter at the time of the event or sent to CLR at Lock Box 56, Richfield, WI 53076.

\*If this presents a financial hardship, CLR can help defray some of the costs. Please contact us if this is the case. Those requesting a speaker are asked to do what they can to assure reasonable attendance for the event. CLR requests attendance of at least 25 individuals. If this minimum is not achieved, an honorarium of \$125 is asked. **NOTE:** Travel and lodging costs should be reimbursed by the inviting group regardless of the number in attendance.

### TRAVEL

Speaker will make his own travel reservations.

- **For events requiring flight arrangement:**  
CLR will calculate the lowest round-trip airfare from the CLR location to the airport nearest the event site using an online website. Circumstances may warrant a car rental (and fuel expenses) which would need to be covered by the host.
- **For events within proximity of CLR office:**  
CLR will calculate the most cost-effective mode of transportation by car: either the round-trip mileage to and from the office location and the event site based on the current IRS mileage rate; or the cost of a car rental and fuel charges, whichever is less.

### HOTEL

When overnight lodging is required, the presenter will stay at a moderately-priced hotel or motel chain in proximity of the event. Christian Life Resources representatives will NOT stay in personal homes.

## TYPES OF PRESENTATIONS:

### Preaching Engagements:

When a representative of Christian Life Resources is invited to preach in a worship service, all expenses are covered by Christian Life Resources

with the request that the inviting congregation(s) help to defray these costs by taking a door offering or providing an honorarium.

**Bible Class Presentation Associated with a Preaching Engagement:**

The stipulations indicated under “Preaching Engagements” apply if the representative of Christian Life Resources is asked to present during the Bible Class period before, between, or after he has preached for a worship service.

**Additional Presentation Associated with a Preaching Engagement:**

When the representative of Christian Life Resources is asked to preach and then present within a time frame that does not require additional travel, lodging or car expenses, no extra fees will be associated with the additional presentation.

If the additional presentation does require extra expenses and the host can guarantee a minimum of 25 people in attendance, Christian Life Resources will not require an honorarium to be paid. Otherwise, a minimum honorarium of \$125 is required by groups unable to meet the 25-person minimum attendance.

**Events Not Related to Preaching:**

This would include presenting a Bible Class (but is not preaching for any worship service), conference, event, or seminar. The host must guarantee a minimum of 25 people in attendance. If such a guarantee cannot be made and the audience is smaller, a minimum honorarium of \$125 is asked. Travel and lodging costs should be reimbursed by the inviting group regardless of the number in attendance.

**PAYMENT OF FEES:**

Fees should be paid in the form of a check made out to “Christian Life Resources” and given to the presenter at the time of the event or sent to the CLR office afterwards.

Christian Life Resources  
Lock Box 56  
Richfield, WI 53076

**QUESTIONS:**

Questions can be directed to CLR by phone at 1-800-729-9535 or by email at [info@christianliferesources.com](mailto:info@christianliferesources.com)



Christian Life Resources  
Lock Box 56 • Richfield, WI 53076  
1-800-729-9535  
[info@christianliferesources.com](mailto:info@christianliferesources.com)  
[www.ACompassionateVoice.com](http://www.ACompassionateVoice.com)  
[www.ChristianLifeResources.com](http://www.ChristianLifeResources.com)